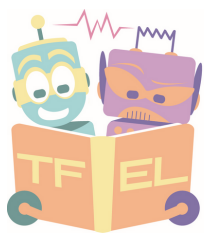


# FIELD RESEARCH SCHOLARS PROGRAM



## Transforming the Field Education Landscape

A year-long program for social work graduate students (MSW/PhD) and postdoctoral scholars who are passionate about research in field education!



### MENTORSHIP

Connect with social work field education researchers and scholars to learn new skills and ways of knowing, while also developing professional networks with fellow researchers.



### SEMINARS

Monthly seminars will be organized for Field Research Scholars and guests to present on their research to discuss implications for social work field education.



### WORKSHOPS/WORKING GROUPS

Working groups provide members with a safe space to express challenges, ask questions, and engage in constructive conversations with peers. Workshops will include topics such as preparing articles for publication and grant writing.

## OBJECTIVES

- Foster a network of mentorship relationships and peer collaboration
- Transform social work graduates into highly qualified personnel
- Create professional development opportunities for emerging social work researchers in field education

## APPLY NOW

Apply by submitting the following to **tfelproject@gmail.com**:

- Resume and cover letter
- A 100-200 word statement including your name, address, level of education, institution, topic/area of interest and why you are interested in this program

**\*The Field Research Scholars Program will run virtually due to COVID 19**

Field Research Scholars will be provided with a \$500 honorarium