



**CELEBRATING
WORLD SOCIAL WORK DAY**

**UBUNTU AND FIELD
EDUCATION**

March 16th, 2021

10:00 AM - 12:00 PM (MST)

Strengthening Social Solidarity and Global Connectedness



Social Sciences and Humanities
Research Council of Canada

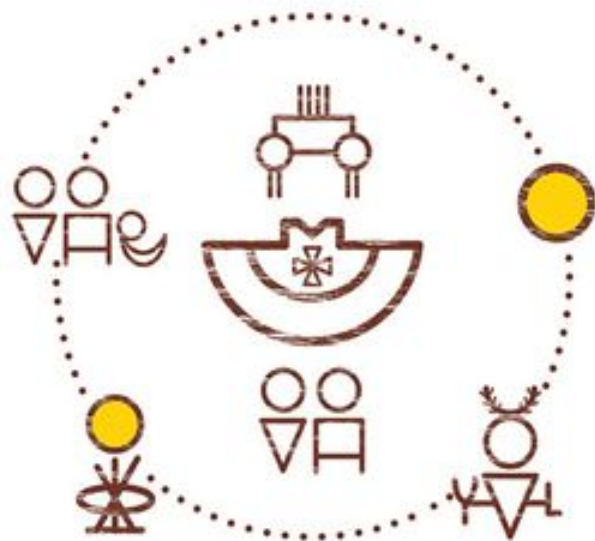
Conseil de recherches en
sciences humaines du Canada

Canada 

TERRITORIAL ACKNOWLEDGEMENT

The University of Calgary respectfully acknowledges that we are located on Treaty 6 territory, a traditional gathering place for diverse Indigenous peoples including the Cree, Blackfoot, Metis, Nakota Sioux, Iroquois, Dene, Ojibway/Saulteaux/Anishinaabe, Inuit, and many others whose histories, languages, and cultures continue to influence our vibrant community.

L'Université de Calgary reconnaît respectueusement qu'elle est située sur les terres du Traité 6, lieu de rassemblement traditionnel pour de nombreux peuples autochtones dont les Cris, les Pieds-Noirs, les Métis, les Sioux des Nakotas, les Iroquois, les Dénés, les Ojibwés/Saulteaux/Anichinabés, les Inuits et bien d'autres encore, dont les histoires, les langues et les cultures continuent d'influencer notre communauté si vivante.



ii' taa'poh'to'p

University of Calgary Office of Indigenous Engagement



Transforming the Field
Education Landscape

TRANSFORMING THE FIELD EDUCATION LANDSCAPE (TFEL)

Celebrating World Social Work Day:

Ubuntu and Field Education

Symposium

March 16, 2021

FUNDING ACKNOWLEDGEMENT

The Transforming the Field Education Landscape project is supported in part by the Social Sciences and Humanities Research Council of Canada (2019-2024)

SSHRC  CRSH



UBUNTU

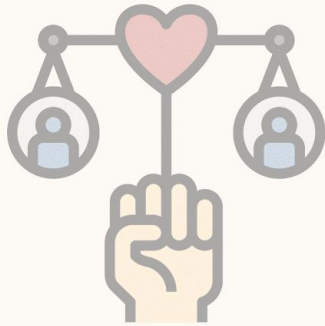
“An authentic human being is
part of a larger and more
significant relational, communal,
societal, environmental and
spiritual world”

(Mugumbate, 2020)

Significance for Social Work

innovation
ideology
social justice
human rights
empowerment
strength

(Bent-Goodley, 2017)



spirituality, community, politics,
management, welfare, counselling, family,
administration, research



Ubuntu-Informed Ethics

→ embrace the whole of humanity as part of our global community or clan,

Ubuntu-Informed Sustainable Development

→ consider our history (ancestors)
→ future (in our descendants)
→ honours our ancestors - ensures the wellbeing of descendants

Ubuntu-Informed Ecospiritual Social Work

→ consider the earth as a member of our community,
→ have a reciprocal relationship.

**Extensions
of
Ubuntu
to guide
our
practice**

PRINCIPLE OF UBUNTU

"TO BE HUMAN IS TO AFFIRM ONE'S
HUMANITY BY RECOGNIZING THE
HUMANITY OF OTHERS..."

(SAMKANGE & SAMKANGE, 1980)

Language/Region

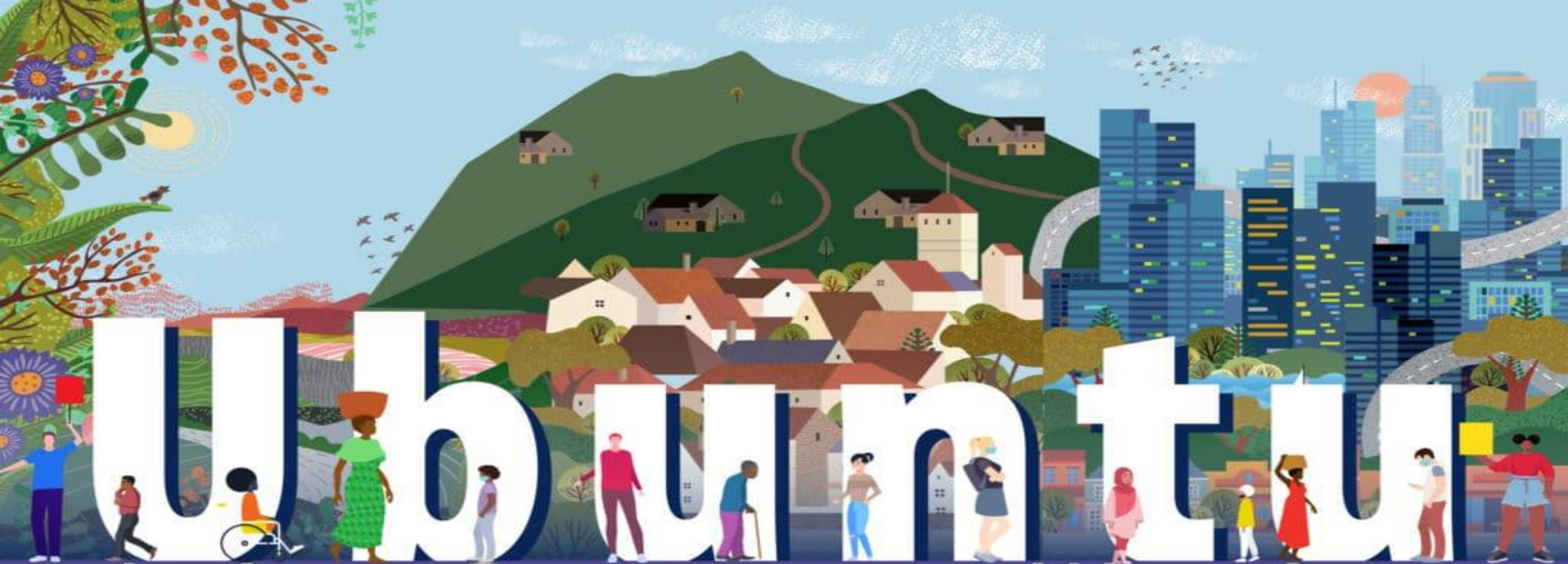
ANGOLA
BANTU
BOTSWANA
BURUNDI
CONGO
ETHIOPIA
KINYARWANDA
KIRUNDI
LUGANDA
MALAWI
MOZAMBIQUE
NDEBELE
NGUNI
RUNYAKITARA
SISWATI
SHONA
TANZANIA
UGANDA
ZULU

Expression

gimuntu
ubuntu
botho
ubuntu
bomoto
iddir
gira ubuntu
gira ubuntu
obuntu-bulamu
umunthu
vumuntu
ubuthosi
ubuntu
obuntu
buntfu/umuntfu ngumuntfu ngebantfu
bumuntu
umuntu
ubuntu ngumuntu ngabantu
ubuntu ngumuntu ngabantu



gezma, dabare, eebe-ogdi, jjige, affini, gaze, debo, jemija,



I Am Because We Are

STRENGTHENING SOCIAL SOLIDARITY & GLOBAL CONNECTEDNESS

WORLD SOCIAL WORK DAY
16TH MARCH 2021
#WSWD2021



Transforming the Field
Education Landscape



READING RECOMMENDATIONS

Bent-Goodley, T., Fairfax, C. N., & Carlton-LaNey, I. (2017). The significance of African-centered social work for social work practice, *Journal of Human Behavior in the Social Environment*, 27(1-2), 1-6, <https://doi.org/10.1080/10911359.2016.1273682>

Chigangaidze, R. K. (2020). An exposition of humanistic-existential social work in light of ubuntu philosophy: Towards theorizing ubuntu in social work practice. *Journal of Religion & Spirituality in Social Work*. <https://doi.org/10.1080/15426432.2020.1859431>

Le Grange, L. (2012). Ubuntu, ukama and the healing of nature, self and society. *Educational Philosophy and Theory*, 44(S2), 56-67. <https://doi.org/10.1111/j.1469-5812.2011.00795.x>

Mabvurira, V. (2020). Hunhu/ubuntu philosophy as a guide for ethical decision making in social work. *African Journal of Social Work*, 10(1), 73-77

Metz, T., & Gaie, J. B. R. (2010) The African ethic of Ubuntu/ Botho: Implications for research on morality. *Journal of Moral Education*, 39(3), 273-290, DOI:10.1080/03057240.2010.497609

Mugumbate, J. R., & Chereni, A. (2020). Now, the theory of Ubuntu has its space in social work. *African Journal of Social Work*, 10(1).

Mugumbate, J., & Nyanguru, A. (2013). Exploring African philosophy: The value of ubuntu in social work. *African Journal of Social Work*, 3(1), 82-100. <https://ro.uow.edu.au/sspapers/3266>

Smith, M. K. (2016). Bringing back Ubuntu. *Academic Psychiatry*, 40, 721-722, DOI 10.1007/s40596-015-0451-5

Van Breda, A. (2019). Developing the notion of ubuntu as African theory for social work practice. *Social Work*, 55(4), 439–450. <https://doi.org/10.15270/55-4-762>



Keynote: Dr. Regine King

Ubuntu and Neoliberalism: A Match or Divorce for Social Work?



**UNIVERSITY OF
CALGARY**

Regine King, PhD Associate
Professor Faculty of Social Work
MT420, 2500 University Drive NW
Calgary, AB, Canada T2N 1N4 E:
regine.king@ucalgary.ca

March
16, 2021

Ubuntu definition

- “A person is a person by or through other people”
- *Umuntu ngumuntu ngabantu* (Nguni language)
- *Umuntu nyamuntu* (Kinyarwanda language)






Ubuntu as a philosophical perspective

- **Ethics** of what it means to be human, to embody humanity, or humanness in action
- Embodiment of the concepts of ontological being and identity of what it means to be a human person in relation to other human persons
- **Identity in relationship creates an ethical community**
- “ Relationship is not merely something we observe objectively, or experience subjectively. Rather, relationships are an active lived reality that shapes our true identity and being” (*Forster, 2010, p.246*)
- An ethics of interrelationships, situated in a communitarian social fabric of caring and sharing

Examples of Ethics of Ubuntu

- Ubuntu as a set of qualities and human virtues of compassion and humanity
- Examples:
 - Day to day interactions
 - Conflict resolution
 - Connection with the cosmos





Ubuntu as a political ideology

- A more communitarian paradigm that goes beyond socialist notions of a 'radical egalitarianism' (Cornell, 2009)
- Decentralized forms of self-government (Benedetta & Margherita, 2013)
- A form of resistance
 - Counter-hegemonic to inform life and death struggles against capitalist enclosure and imperialism
 - Ubuntu rejects dualities (either or thinking)

Ubuntu from colonialism to neoliberalism

The ongoing colonial project continues to:

- **Misappropriate ubuntu as** senseless, and even violent, in relation to nation-building in Africa
- **Dismiss ubuntu** as hierarchical and outdated
- **Debilitate and alienate** ubuntu as way of being and knowing rooted
 - The impact is on the identity of the African people at home and abroad

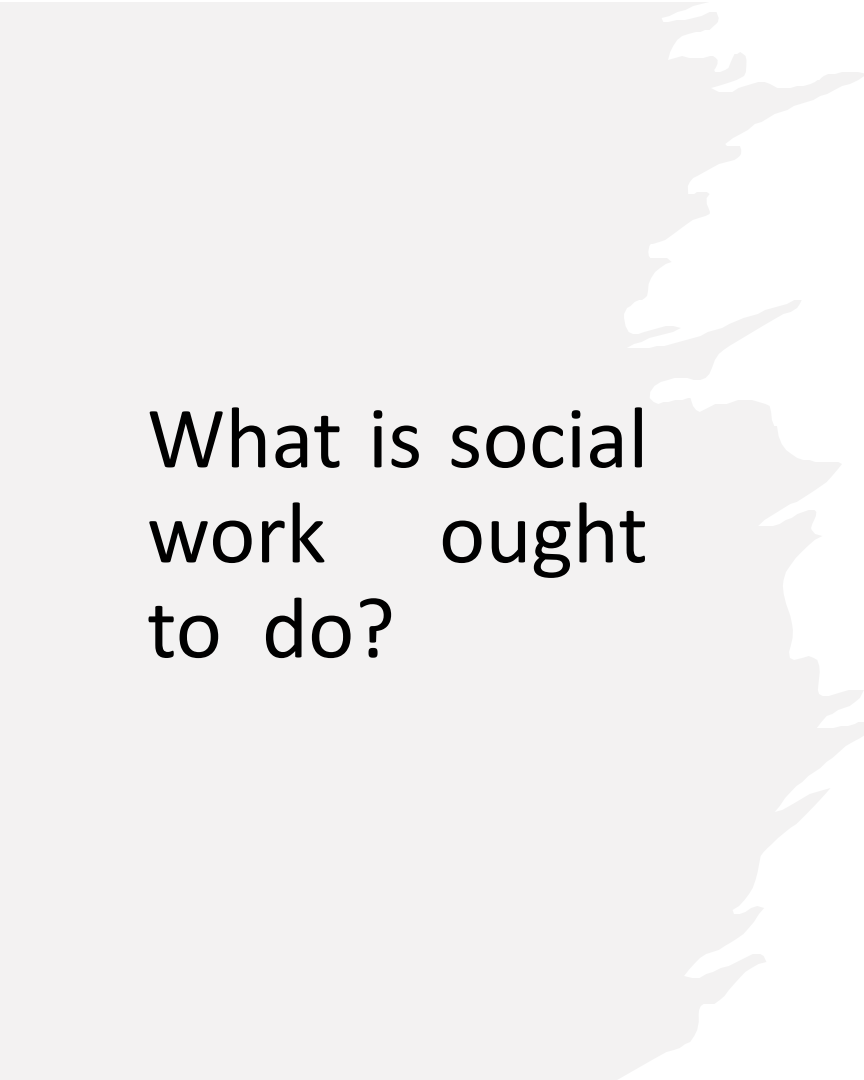
Challenge for social work

Social work education and social workers operate in institutions influenced by systemic racism and discriminatory policies/practices

- Ubuntu principles may not have any real consequences on how people experience social work interventions/services

Ubuntu has been misappropriated and used in marketing, that is true for social work today!

- The rhetoric makes institutions feel good, rather than build community



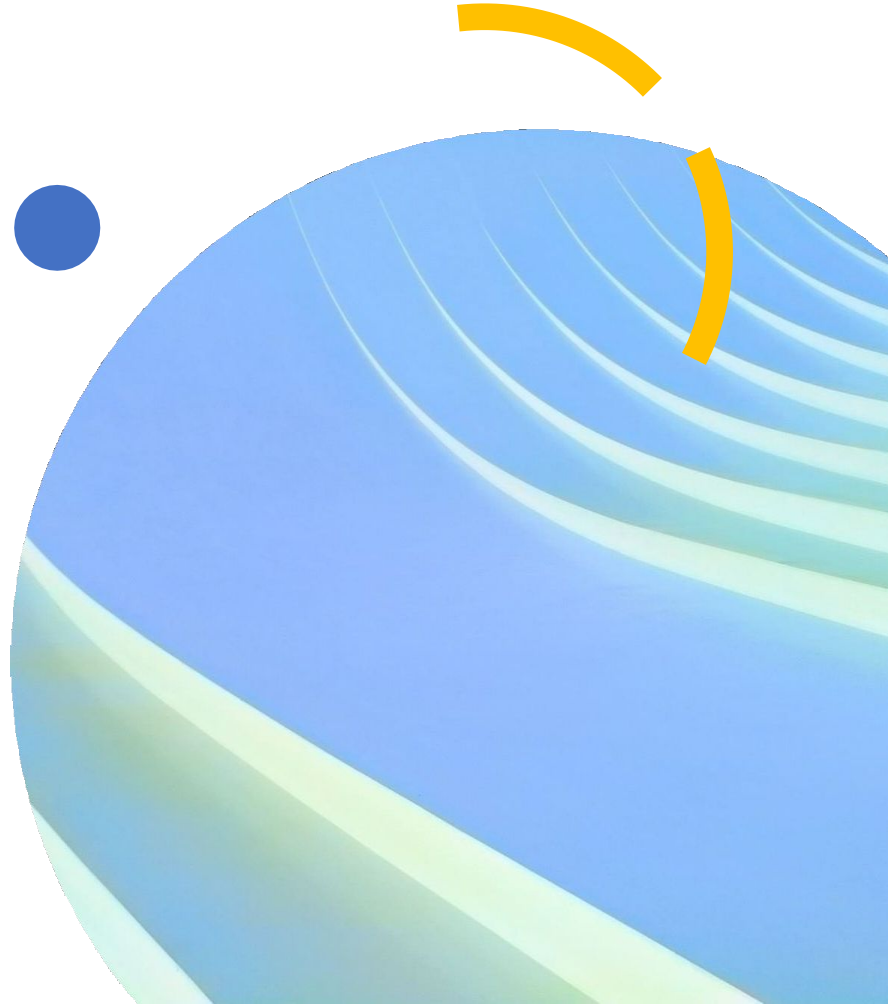
What is social work ought to do?

- Ubuntu challenges the moral principles of capitalism (commodification and consumerism of human values)
- Social work's adoption of ubuntu would require divorcing from neoliberalism
 - Take a moral/ethical stand against prevailing values of neoliberalism
 - Take a community-development approach to combat hunger and poverty, environmental degradation, and promote transformation in the spirit of *ubuntu*

Conclusion

For the practice of social work to reflect Ubuntu principles, we need to completely abandon neoliberalism

For the practice of social work to reflect Ubuntu principles, we need to abandon approaches that emphasize individual solutions to social problems!





Questions





Panel Discussion with TFEL Partners

Dr. Augusta Olaore, Babcock University

Mr. Clement Dlamini, University of Eswatini

Dr. Wassie Kebede, University of Addis Ababa

Dr. Adugna Abebe, University of Gondar

PANEL QUESTION #1

What does the spirit of Ubuntu mean to you, and how does it inform your social work practice and field education in your context?

PANEL QUESTION #2

How do we build community between ourselves, as field educators and students, and inspire a similar sense of community and connectedness in the wider society?



10 MINUTE BREAK

Strengthening Social Solidarity and Global Connectedness

The image features a background of a sunset or sunrise over a mountain range. The sky transitions from a deep blue at the top to a bright yellow in the middle, and then to a warm orange and red at the bottom where the mountains are silhouetted. Several white-outlined clouds of various sizes are scattered across the sky. Each cloud contains a word or phrase in a bold, black, sans-serif font. The text in each cloud has a red and blue 3D shadow effect, giving it a sense of depth. The central cloud is the largest and contains the word 'UBUNTU'. Other clouds contain the words 'UNITY', 'RESEARCH & PRACTICE', 'COMMUNITY', 'SERVICES', 'SOCIAL WORK', 'FIELD EDUCATION', 'HUMANITY', and 'STRENGTH'.

UNITY

**RESEARCH &
PRACTICE**

COMMUNITY

SERVICES

**SOCIAL
WORK**

UBUNTU

**FIELD
EDUCATION**

HUMANITY

STRENGTH

GOOGLE JAMBOARD - INSTRUCTIONS

1. Follow link
2. Breakout rooms numbers correspond with your Jamboard page
3. Use the arrows at the top of screen to scroll to your breakout room
4. Introduce yourselves briefly and discuss questions as a group
5. Use the features on the left bar to add your thoughts (e.g. sticky notes)
6. Designate a spokesperson to debrief after in the larger group

GOOGLE JAMBOARD DEBRIEF

Welcome back!

Please provide 1-2 brief takeaways in the chat box



THANK YOU!

Strengthening Social Solidarity and Global Connectedness

For more information
about the partnership please contact:

tfelproject@gmail.com

@TFELProject



www.tfelproject.com

Dr. Julie Drolet

Project Director

jdrolet@ucalgary.ca